



# QMA Track Checklist

Please fill in all information boxes and return form to Vice President, Michelle Barzee

Track Dimensions:

Track Width:	<input type="text"/>	feet
Infield Width:	<input type="text"/>	feet
Infield Length:	<input type="text"/>	feet
Overall Track Length:	<input type="text"/>	feet

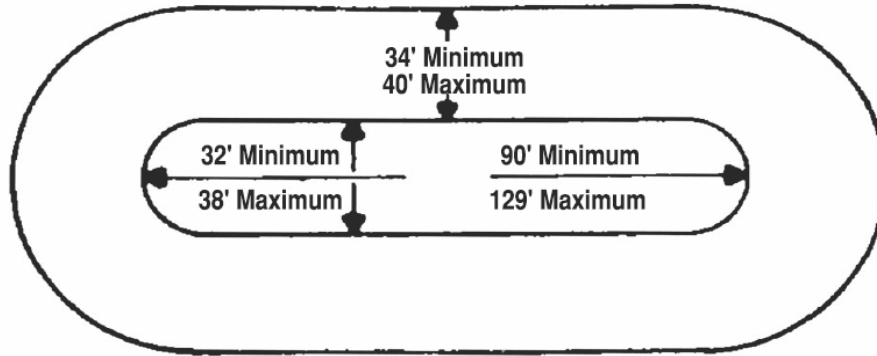


Figure 1: Track Dimension Detail

Speed Breakers (or huggy poles for Dirt tracks):

Quantity per end: (minimum 5)

Distance from corner line to breaker:

<input type="text"/>	breakers or poles
<input type="text"/>	qty
<input type="text"/>	inches

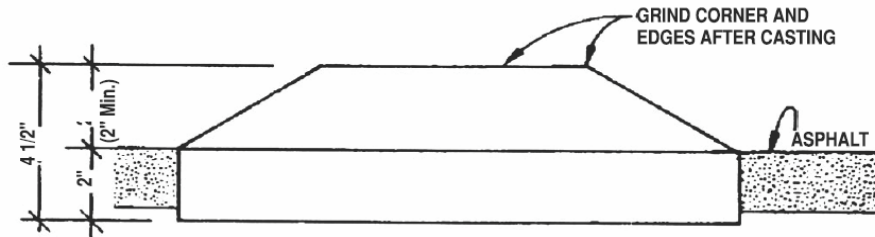
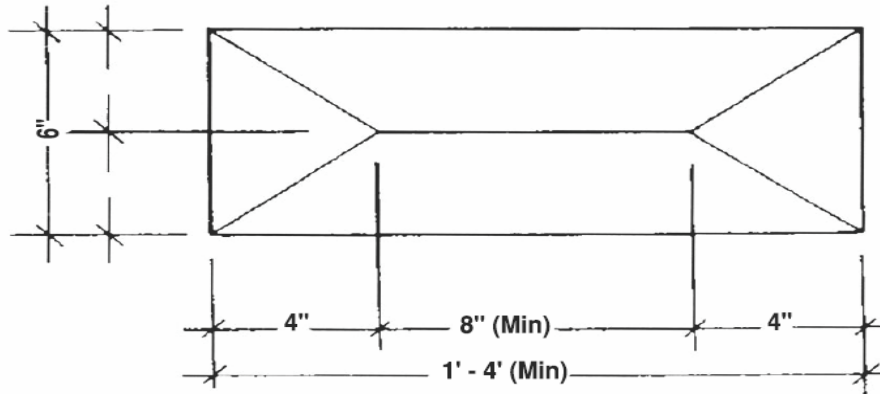
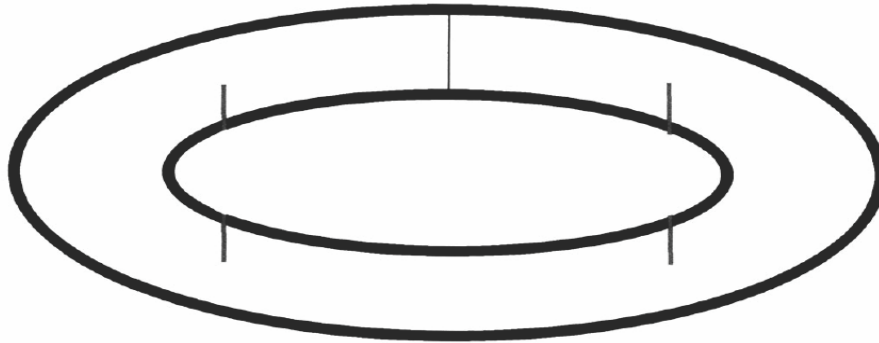


Figure 2: Speed Breaker Detail

Reference Lines:

Length:  feet  
Distance from apex of corner:  feet



Reference lines should be approx. 12-15 feet from the apex of the turn. It should be approx. 5 feet long & approx. 3-6 inches thick. This line is to help the Judges find where the drivers should be yielding. It will also help the driver know when to yield if he or she doesn't have the pass made cleanly.

Figure 3: Reference Lines Detail

Work Area:

Location:   
Dimensions:  feet x feet

Handler Safe Area:  Yes / No

Corner Person Locations: (4 corner persons required)

Quantity:   
Locations:   
 (ex. Turn 1, 2, 3, 4)

Soft Walls:  Yes / No

Emergency Information Posted:

EMS Service  Yes / No  
Fire  Yes / No  
Police  Yes / No  
Medical Facility (Number & Map)  Yes / No

**(Provide copy with checklist)**

Flagger:

Off track:  Yes / No  
Location:

Judges Location:

Off track:  Yes / No  
Location:

Caution Lights:

Location:  Yes / No  
Number:

**\* (Please include photos of any items for clarification, if necessary)**