



Chapter 17

- Track Construction Procedure
(Article 3, Sec. 5)

ARTICLE 3

Section 5 TRACK CONSTRUCTION (Permanent Track)

1. All new tracks must be constructed per the specifications in Diagram 3-1. Blue prints must be submitted to your Regional Director and National Safety Director for review and final approval from the NBOD.
2. Tracks existing prior to January 1, 1995 must maintain their existing specifications and have all new alterations approved by the National Board.
3. All tracks must have QMA approved speed-breakers. Dirt tracks may run approved huggy poles in lieu of speed breakers.
4. Construct speed-breakers per Diagrams 3-2 and 3-3.
5. Minimum of five speed-breakers at each end of the track.
6. Install speed-breakers in turns approximately two inches inside of white/yellow line.
7. Reference lines will be painted on the track to indicate the point for determining a cars position (Judging) when a car is entering and exiting the corners. The lines (4) should be placed 12' - 15' from the apex of the corner, approximately 5' long (crossing the cars path), and 3"-6" wide.
8. Each track shall permanently post the phone numbers and addresses to the nearest EMS service, Fire, and Police near the track so they will be displayed even if the buildings are not open. A map to the nearest medical facility should also be posted. Each club should give directions to the track to the nearest Fire Department and EMS.
9. All new tracks must have an approved soft wall design that absorbs and dissipates energy when struck by a car.
10. Soft walls are recommended for all Grand National Events, subject to review by the National Board of Directors. "Soft Wall" suggestions are posted on the QMA website. QMA National Board will make the determination if soft walls are needed at host clubs track.

Diagram 3-1: Track Layout

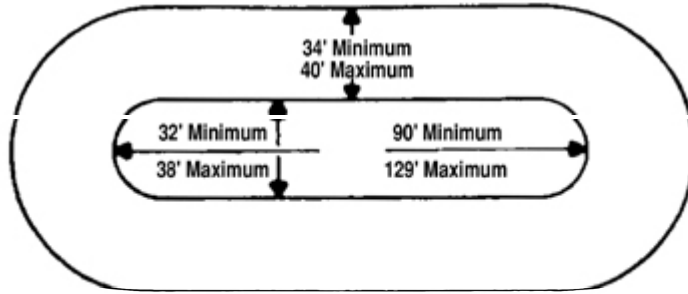


Diagram 3-2 Speed-breaker Detail

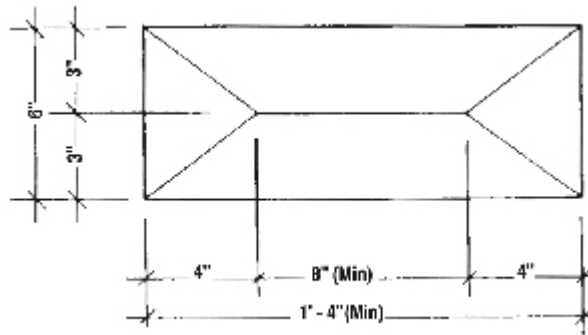
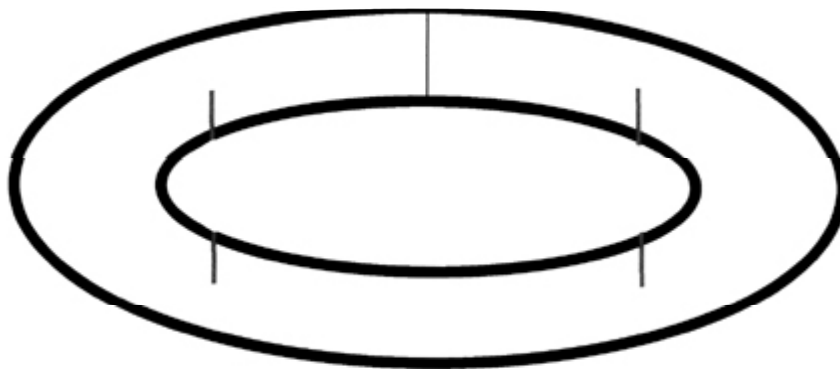
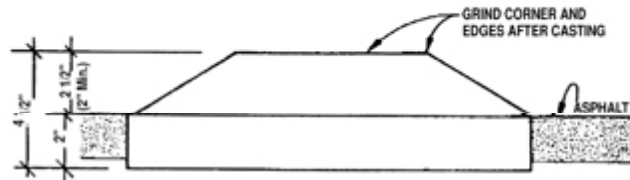


Diagram 3- 3 Speed-breaker Elevation



Reference lines should be approx. 12-15 feet from the apex of the turn. It should be approx. 5 feet long & approx. 3-6 inches wide. This line is to help the Judges find where the drivers should be yielding. It will also help the driver know when to yield if he or she doesn't have the pass made cleanly.